

2023 Update to the Community

Come sit with us!

sustainable
WATERLOO ▸ REGION

120+
SWR memberships

40,000+
Full time employees supported

19 Events held in
2023

700+
Attendees across events

For spending
18,000+
supporting us
through the year,
we thank our
amazing
230+
volunteers!

1800+
students impacted across
5 public schools

 **1042**
Trees and
shrubs
planted in

20 Municipalities **12** forests

74,927.9
Tonnes Committed (CO₂e)

94,097.1
Tonnes Reduced to date (CO₂e)

**THE
COMMUNITY
ENGAGED**

TravelWise

12

Years of partnership



Region of Waterloo

40+

Organizations across
Waterloo Region



Microforest

3

Years

20

Forests

1,816

Trees planted

5

Municipalities in
Waterloo Region



Eminidowang Kitigaan (Spirit Garden for Everyone)



5 School Plantings



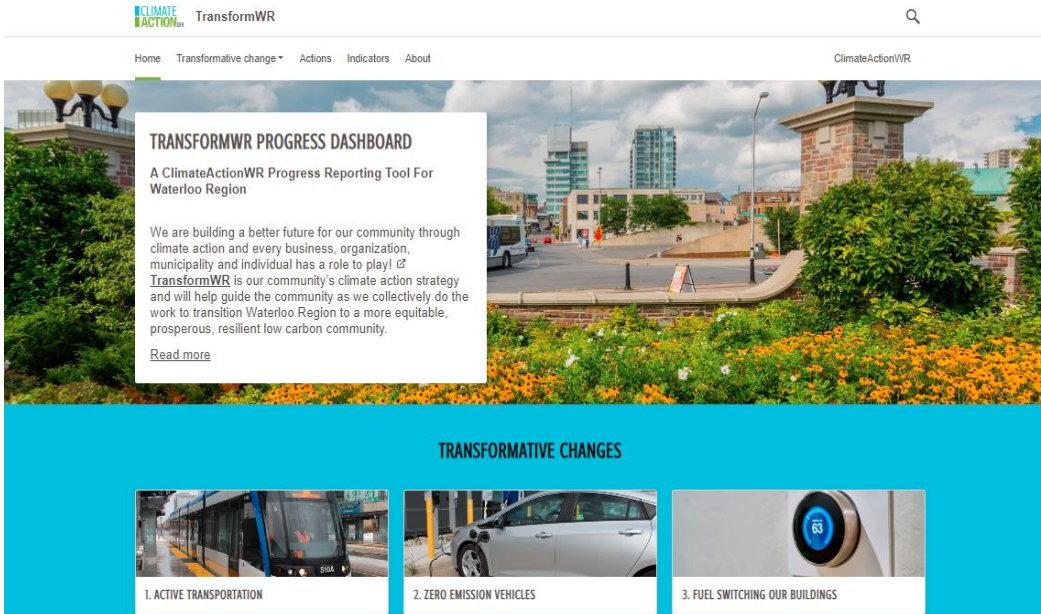
Microforest Financial Sponsors



Climate Action



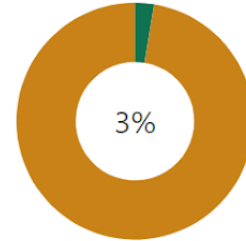
TransformWR Progress Dashboard



The screenshot shows the TransformWR website interface. At the top, there is a navigation bar with 'Home', 'Transformative change', 'Actions', 'Indicators', and 'About'. A search icon is on the right. The main content area features a large background image of a city square with a fountain. A white text box on the left contains the following text: 'TRANSFORMWR PROGRESS DASHBOARD', 'A ClimateActionWR Progress Reporting Tool For Waterloo Region', and a paragraph explaining the dashboard's purpose. Below this, a blue banner titled 'TRANSFORMATIVE CHANGES' lists three categories: '1. ACTIVE TRANSPORTATION' (with a bus image), '2. ZERO EMISSION VEHICLES' (with a car image), and '3. FUEL SWITCHING OUR BUILDINGS' (with a thermostat image).

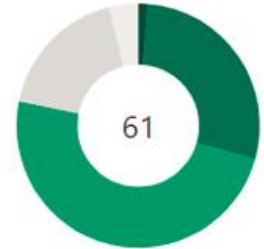
ACTIVE ACTIONS LAST UPDATED

Actions that have been updated within the last 2 months



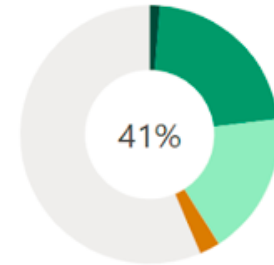
ACTIONS BY PHASES

Continuous and completed actions

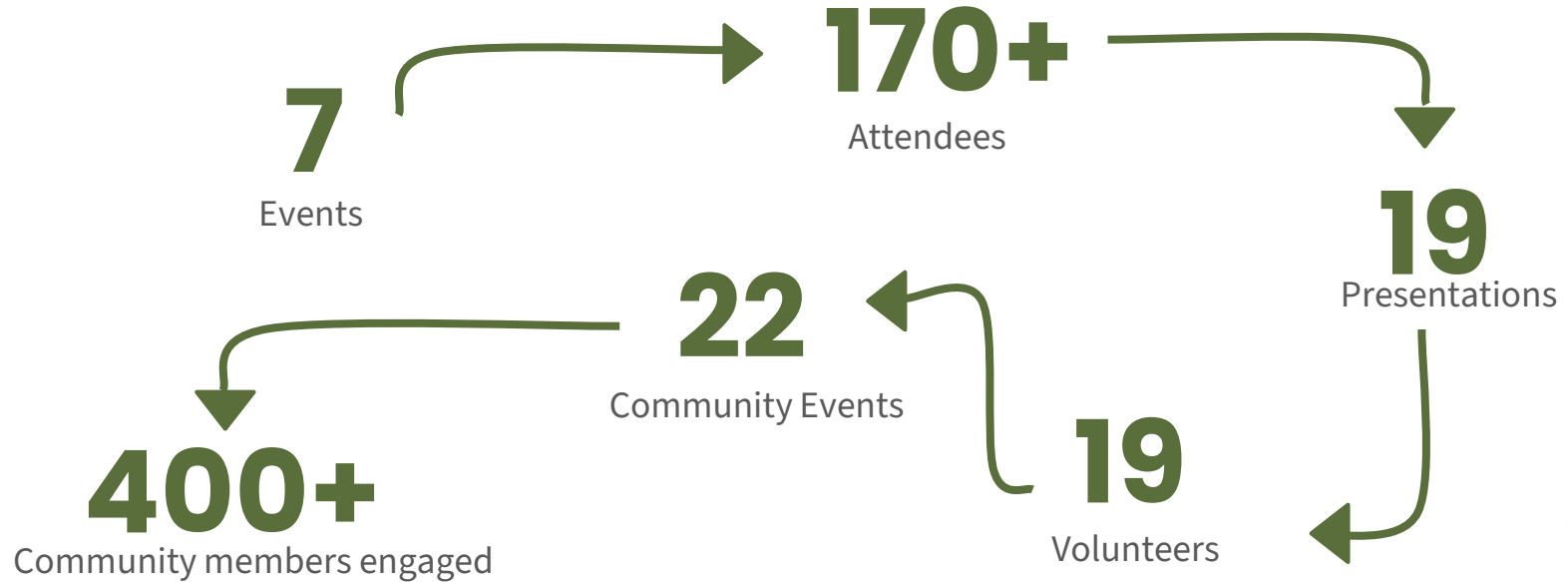


ACTIONS BY STATUS

Actions proceeding as planned



Acting collectively to build resilience.



Impact Network

impact network

74,927.9

Tonnes Committed (CO₂e)

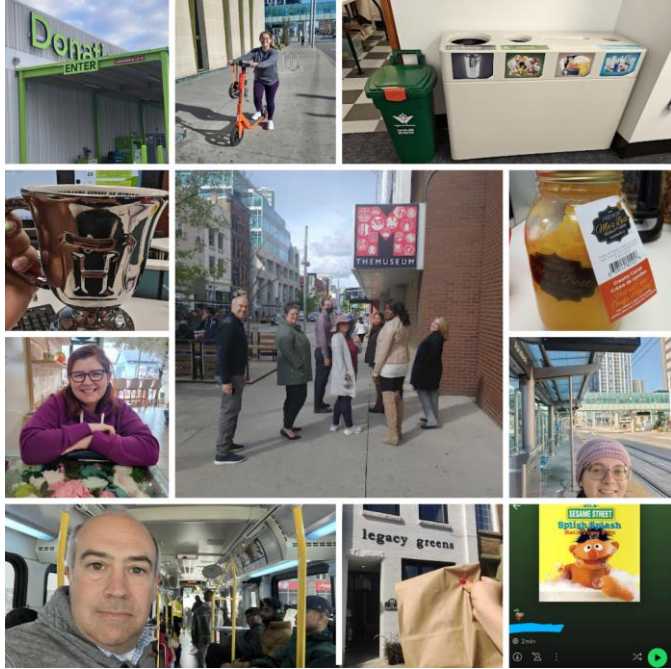
94,097.1

Tonnes Reduced to date
(CO₂e)

7,548.1

More tonnes reduced
than 2022





42

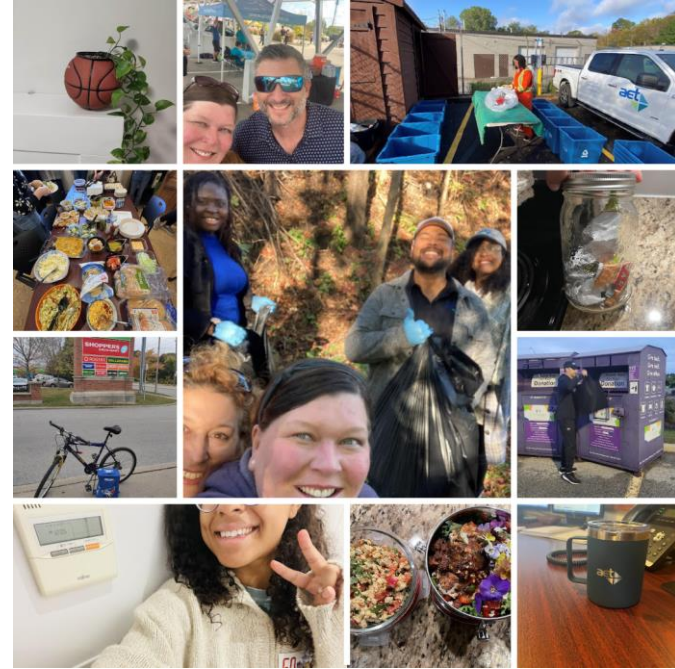
Uncooked meals

43

Shortest shower
times

150,000

Steps counted



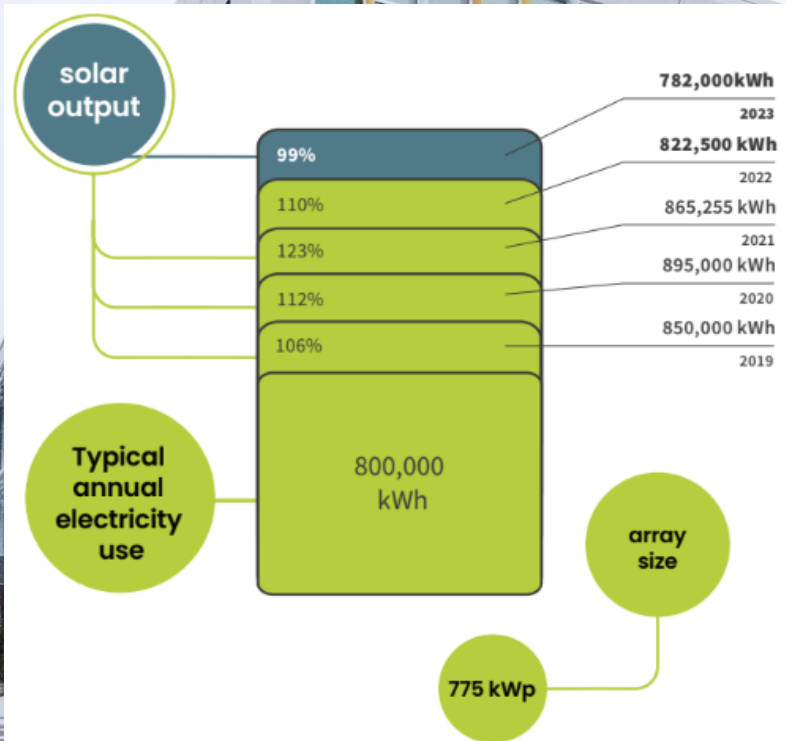
Evolv1

10+
Building tours

200+
Students Impacted



UNIVERSITY OF
WATERLOO



THE CORA GROUP
Developers & Managers of Commercial Real Estate

evolv**1**





Seeds we are planting in 2024

**impact
network**





GROW WITH Cleantech

16-Week Training Program

POWERED BY:



FUNDED THROUGH:



Sustainability in the news: featuring SWR

WATERLOO REGION **RECORD**

By Catherine Thompson **Reporter**



Thank you

Thank you for building our forest
with us.