



Region of Waterloo

**Supporting the City of Kitchener's Innovative Planning
Policy Framework to Address the Housing Crisis through the
Approval of Official Plan Amendments
(PDL-CPL-24-013)**

Regional Council
Wednesday June 19, 2024

Support for Growing Together

Official Plan Amendment Nos. 48, 49, 50 and 133 are before Regional Council for decision.

This work will:

- Support increased housing supply
- Increase the range and mix of housing types
- Allow the City to require affordable housing in multi-unit residential development around Protected Major Transit Station Areas

Support for Growing Together

Recommend that the Regional Municipality of Waterloo:

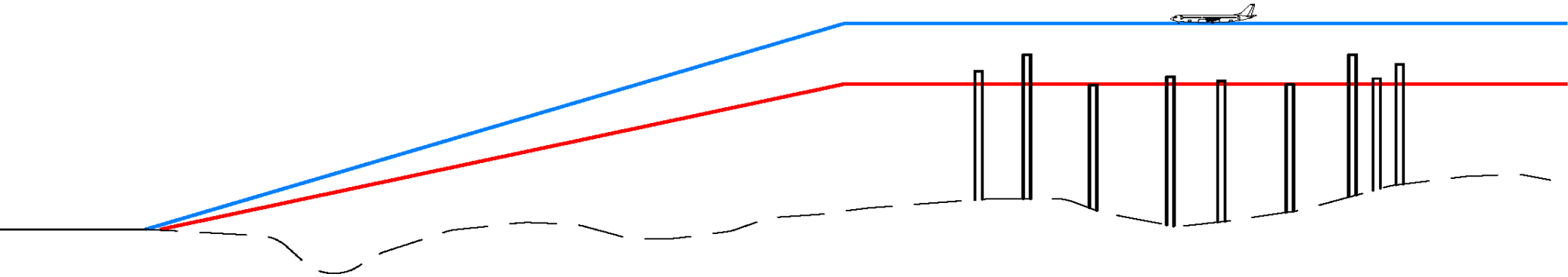
- approve Amendments Nos. 48, 50 and 133 to the Official Plan of the City of Kitchener as adopted by the City of Kitchener
- modify and approve Amendment No. 49 to the Official Plan of the City of Kitchener

Support for Growing Together

Modifications:

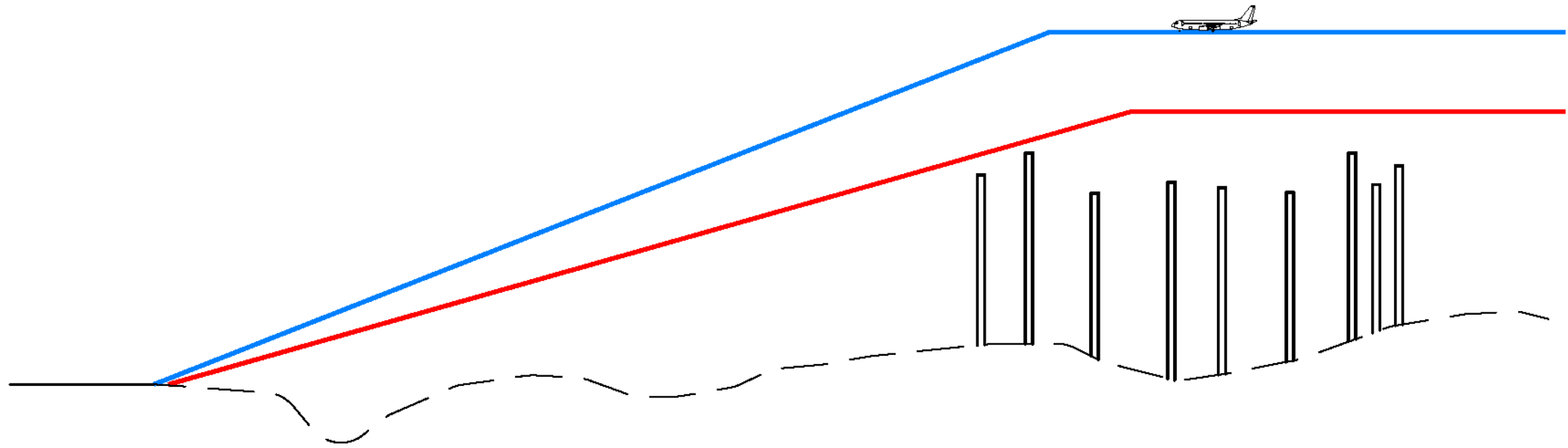
- Provide certainty and transparency for future development
- Permit development in the range of 30-50 storeys
- Allow for consideration of additional height through zoning bylaw amendment subject to an aeronautical assessment
- Minimize risk associated with incompatible land uses



Airport approach – Current state



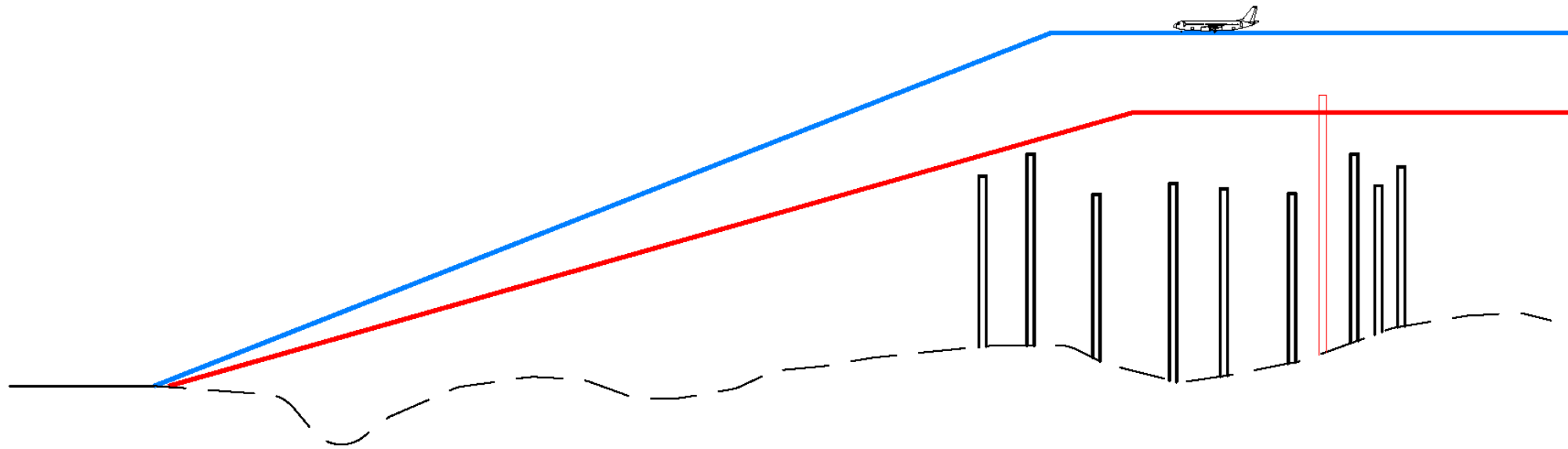
- Flight Path
- Highest Obstacle Limit



Airport approach - Obstacle limit raised to maximum height (July 2024)



-  Flight Path
-  Highest Obstacle Limit

Airport approach - Possible future development with no max height



-  Flight Path
-  Highest Obstacle Limit

Support for Growing Together

As outlined in report PDL-CPL-24-013, recommend that the Regional Municipality of Waterloo:

- Approve Amendments Nos. 48, 50 and 133 to the Official Plan of the City of Kitchener
- Modify and approve Amendment No. 49 to the Official Plan of the City of Kitchener