

# Alternate Destination Clinics Update

December 5, 2023



Region of Waterloo  
PUBLIC HEALTH AND  
PARAMEDIC SERVICES

CAMBRIDGE  
NORTH DUMFRIES

**OHT**

**KW4**  
ONTARIO HEALTH TEAM

## Presenters:

Steve Keczem (Steering Committee Co-Chair)

Kristina Eliashevsky (CND Ontario Health Team Lead)

Ashnoor Rahim (KW4 Ontario Health Team Lead)

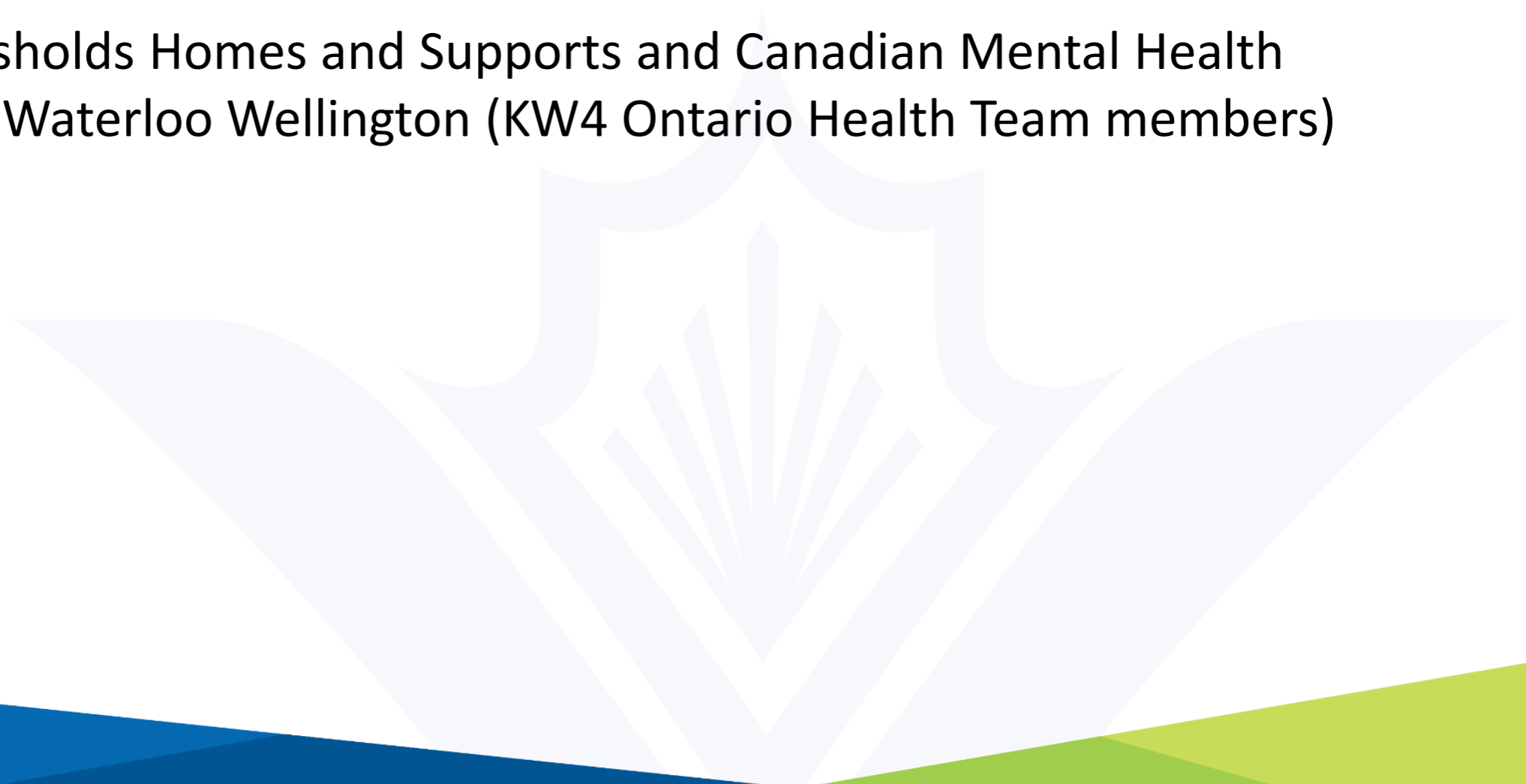
Eric Philip (Thresholds Homes and Supports)

# Alternate Destination Clinics

- People experiencing mental health and addiction concerns, and their caregivers, need timely access to high quality care that is accessible, coordinated, and outside of the emergency department.
- Builds on the Waterloo Region Community Safety and Wellbeing Plan.
- Community Steering Committee with over 20 service providers and community members.

# Clinic Locations

- Cambridge North Dumfries Area
  - Lead: Cambridge North Dumfries Ontario Health Team
- Kitchener-Waterloo-Wellington-Wellesley-Woolwich (KW4) Area
  - Leads: Thresholds Homes and Supports and Canadian Mental Health Association Waterloo Wellington (KW4 Ontario Health Team members)



# Cambridge-North Dumfries

- From March-April 2023, the Cambridge North Dumfries Ontario Health Team piloted an eight-week Community Mental Health and Addictions Clinic (C-MAC).
- The C-MAC was established to improve quick access to mental health and addictions treatment, improve the patient experience in navigating treatment and alleviate system pressures.

# Kitchener-Waterloo-Wilmot-Wellesley-Woolwich

- Mental Health and Addictions Integrated Crisis Care Centre is a collaborative clinical initiative between the Canadian Mental Health Association Waterloo-Wellington and Thresholds Homes and Supports, with support from other health care and community partners.
- The initiative seeks to integrate services, improve outcomes and provide an alternative destination for individuals in crisis other than the hospital emergency department.

# Next Steps

- Confirm locations and clinical structures
- Identify existing resources to re-allocate or co-locate
- Submit application for funding to Ontario Health West

