

Corporate Climate and Energy Transition

2021 GHG Emissions Inventory Results
Presentation to Planning and Works
Committee

April 4th, 2023

PDL-CPL-23-006



Region of Waterloo

Context for Climate and Energy Transition

Local Climate Trends



- Extreme heat
- Precipitation
- Storm events

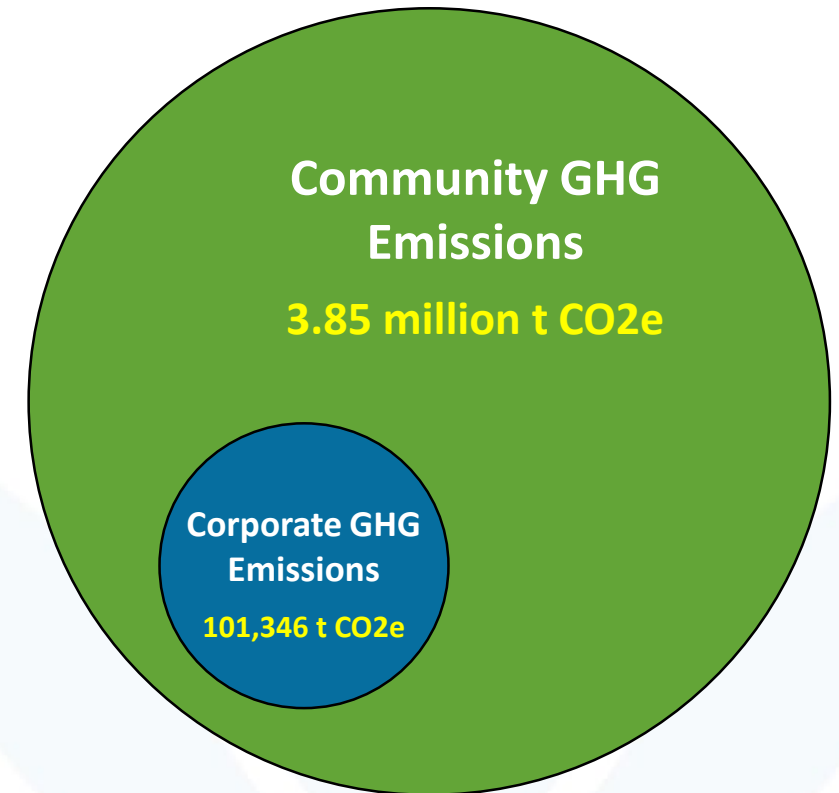
Risks and Impacts



- Health
- Infrastructure
- Economy

Collaborative Approach to Climate Action

- ClimateActionWR
- Climate emergency declarations
- TransformWR: 50% GHG emissions reduction below 2010 levels by 2030, and 80% by 2050
- Corporate and community greenhouse gas inventories



Regional Plans, Strategies and Initiatives

Plans and Strategies

- Regional Official Plan Amendment
- Community Climate Adaptation Plan
- Corporate Energy Plan
- Community Energy Investment Strategy
- Corporate Infrastructure Climate Adaptation Plan
- Integrated Mobility Plan

Major Initiatives

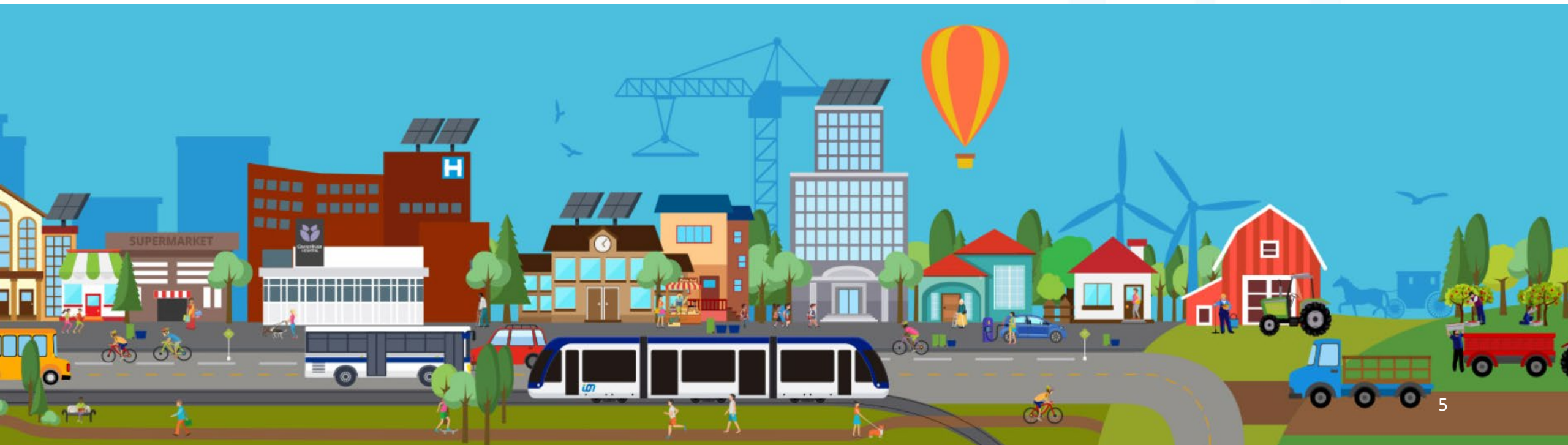
- ION Transit System and Central Transit Corridor Intensification
- Bio-gas co-generation facilities
- Diversion of bio-solids from landfill
- LED street light conversion
- Net zero building standards for new housing
- Climate Change Health and Vulnerability Assessment

Work Underway: 2023 Climate and Energy Transition Priorities

1. Continue to Build Organizational Capacity

2. Develop Corporate Carbon Budget

3. Develop Corporate Climate Transition Strategy



Work Underway: Corporate Climate Transition Strategy

Preliminary Corporate Outcomes to be achieved by 2050

1. Fossil fuel use has been eliminated in all corporate operations and services

2. Local energy generation, storage, and use has been optimized

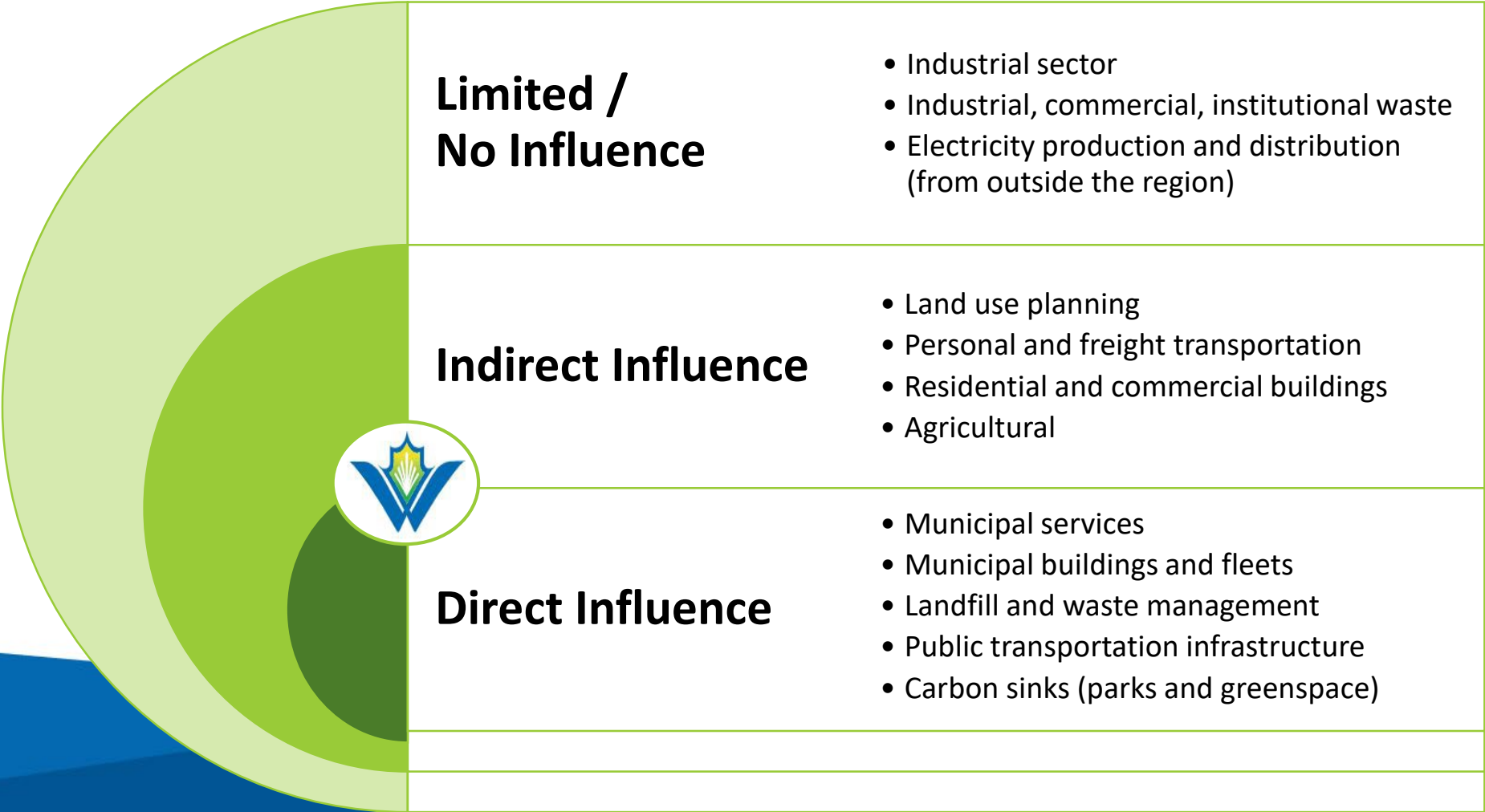
3. Community modal shift to active transportation has been enabled

4. Methane emissions have been minimized

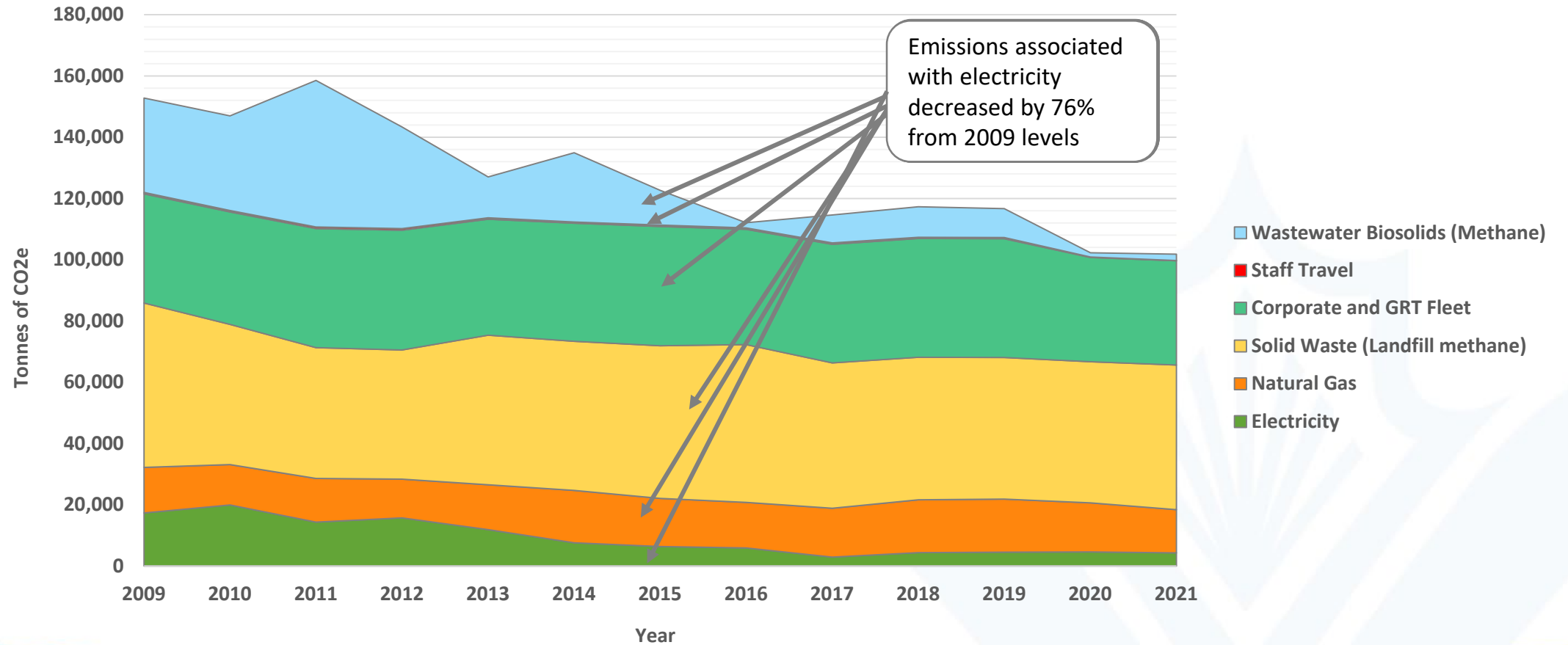
5. Essential programs and services are resilient to a changing climate

6. Risks to infrastructure have been reduced through asset management

ROW Sphere of Influence on GHG Emissions



2021 Corporate GHG Emissions



Fostering Transformational Change

- Continue to implement TransformWR
- Develop tools and strategies to help incorporate climate change into Regional decision-making
 - Corporate Carbon Budget
 - Corporate Climate Transition Strategy
- Immediate, ambitious climate action is essential to achieving our strategic priorities