



# Canada-Wide Early Learning and Child Care (CWELCC) Directed Growth Update



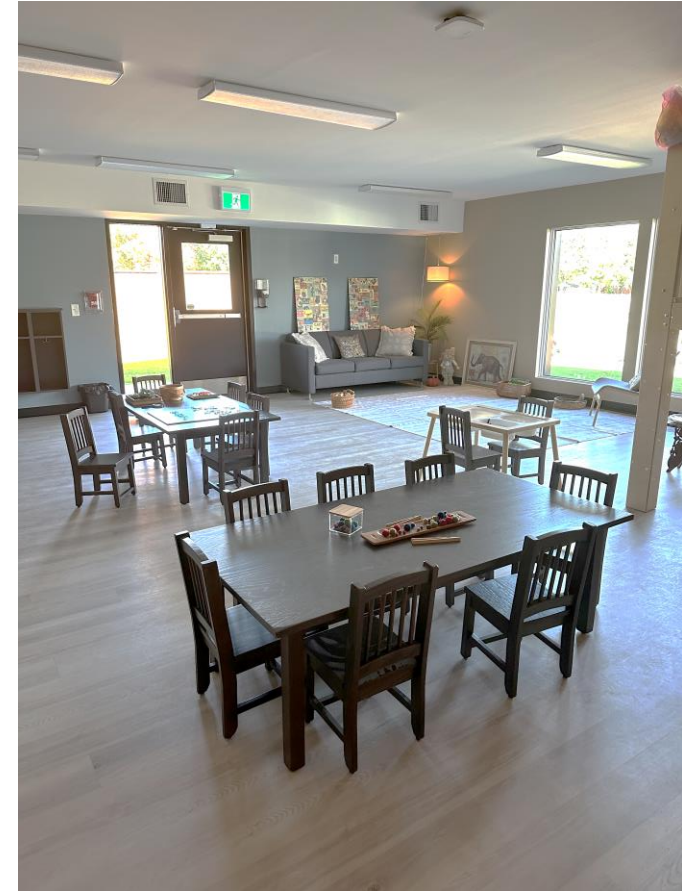
# CWELCC Directed Growth Update

- The Region is on track to meet the CWELCC growth target of 3,725 new child care spaces by 2026. To date, over 2,284 new CWELCC child care spaces have been created in Waterloo Region.
  - A further 1,441 spaces are in progress and will be created before the end of 2026.
- New CWELCC spaces are located in one of thirteen Priority Areas and/or prioritize access for families who need affordable child care the most, including families that experience low income or who are underserved in the licensed child care system.



Equitable services  
and opportunities

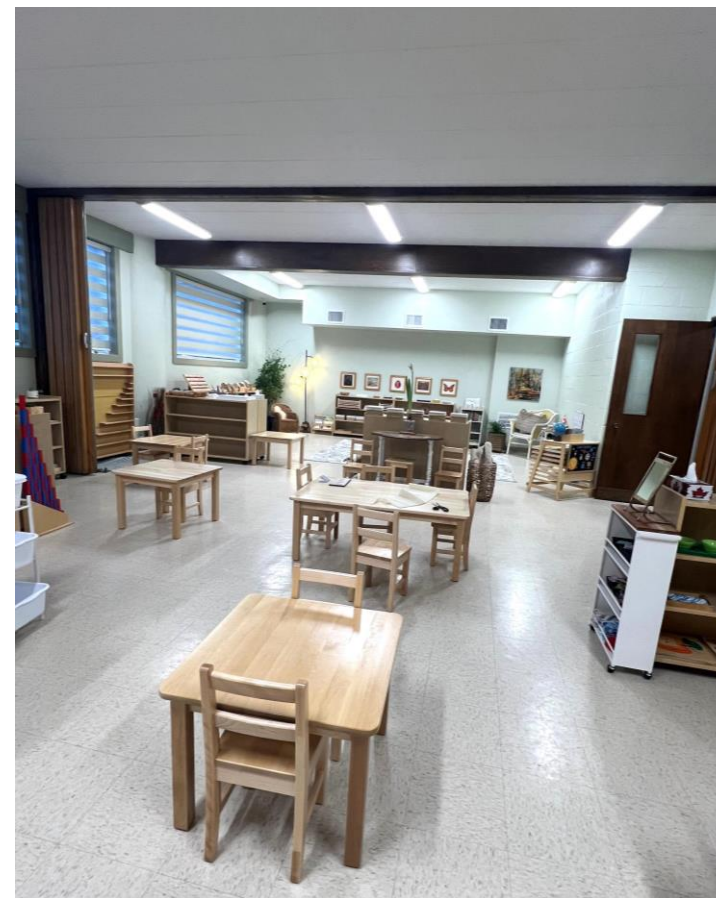
# Creative Beginnings Early Learning & Child Care - Elmira



Equitable services  
and opportunities



# Brason Montessori Academy – Waterloo



Equitable services  
and opportunities

# Licensed Home Child Care



Equitable services  
and opportunities



# Before & After School Spaces



# CWELCC Directed Growth Update

- While the spaces added through CWELCC will help address demand for child care, additional spaces are needed to fully meet Waterloo Region's child care needs as the Region continues to grow.
- Demand for licensed child care continues to far exceed available spaces in Waterloo Region.
- Even with the new CWELCC spaces, only 32% of children ages 0-4 years have access to an affordable child care space in Waterloo Region.
- Children's Services has requested an additional 507 spaces from the Ministry of Education to continue to grow and create affordable infant, toddler and preschool spaces for families who need them the most.



Equitable services  
and opportunities

# CWELCC Directed Growth Update

- In alignment with provincial requirements, the majority of new CWELCC spaces created in Waterloo Region are not-for-profit spaces.
  - Locally, there is strong interest and organizational capacity from not-for-profit operators to support the creation of new CWELCC child care spaces.
  - However, not-for-profit operators have identified barriers to increasing child care spaces in priority areas, including the lack of affordable land and/or space that is suitable for high quality child care.



Equitable services  
and opportunities



# CWELCC Directed Growth Update

- Children's Services continues to work with internal and external partners to identify land and space that can be used for community based not-for-profit child care.
  - As directed by Council (CSD-CHS-24-001) Children's Services is working with Housing Services, Economic Development, and Facilities to identify Regionally owned buildings and lands located in priority neighbourhoods that can be used for community based not-for-profit child care.



Equitable services  
and opportunities

# 1388 Highland Rd., Kitchener



1388 Highland Rd. Kitchener, ON

SAVIC HOMES

Quality of Service

Building location

1388 Highland Rd. Kitchener, ON

Project

Multi Unit Residential Development  
1388 HIGHLAND  
Concept 1A

Drawing

L1 Plan

Date: March 2014 Drawing No: 11/000



Equitable services  
and opportunities



# Ga'nigqhi:yo Child Care and Family Centre



Equitable services  
and opportunities

# CWELCC Directed Growth Update

- Children's Services is also working with other community partners, including the Waterloo Region District School Board and the Waterloo Catholic District School Board to identify potential school sites that would accommodate prefabricated modular buildings which may accommodate not-for-profit child care operators.
- This may allow child care to be created efficiently and cost-effectively in the neighbourhoods where children live and aligns with parental preference to access child care that is located close to their home.



Equitable services  
and opportunities



# CWELCC Directed Growth Update

- The CWELCC plan is fully funded by the Province and has no impact to the Regional Property Tax Levy.
- The Operating Budget for CWELCC for 2024 is \$99M.
  - Of this \$8M is for CWELCC start-up funding to support child care growth.
- The amount of provincial funding available to support child care growth does not cover all the renovation and start-up expenses and child care operators must also financially contribute towards the costs of expansion.



Equitable services  
and opportunities

# CWELCC Directed Growth Update

- Access to high quality and affordable early learning and child care is necessary for the well-being of all children, women's workforce participation, addressing the impacts of poverty, and supporting a robust economy.
- Children's Services remains committed to expanding the local licensed child care system in an intentional manner that balances the needs of children and families with supporting child care operators.
- Further growth of the child care sector will ensure Waterloo Region has child care spaces for families who need affordable, high-quality child care the most.



Equitable services  
and opportunities