

Appendix B: Proposed Speed Limit Strategies at King Alfred Academy and Balsam Grove Parochial School

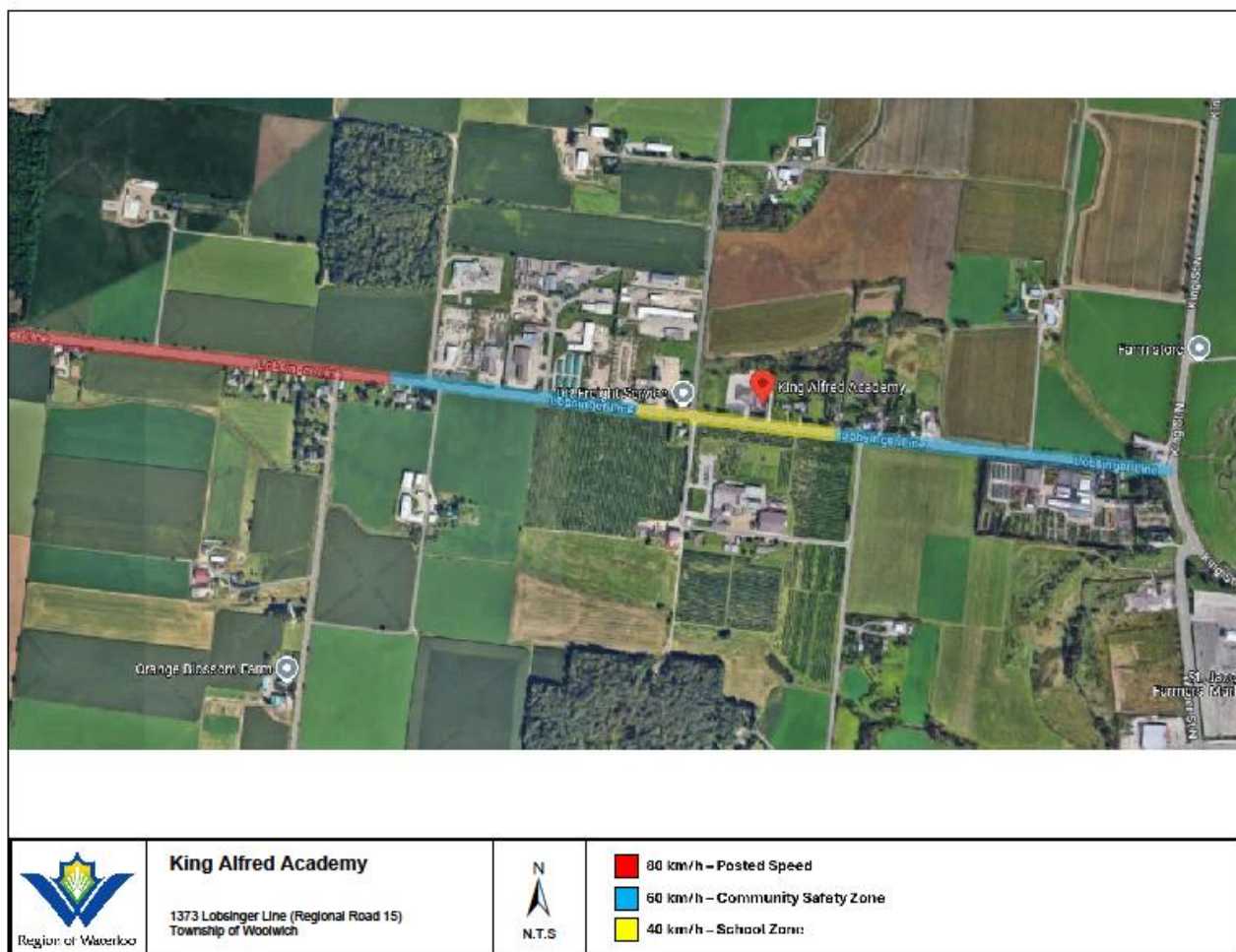


Figure 1 Displays the changes in speed limits around King Alfred Academy. The speed starts at 80 km/h, then drops to 60 km/h as you enter the Community Safety Zone. The Community Safety Zone extends 250 meters in each direction from the school property. After passing the School Zone, the speed limit remains at 60 km/h for an additional 500 meters. The School Zone itself covers 150 meters on each side of the school property, where the speed limit is reduced further to 40 km/h. After passing both the School Zone and the 60 km/h zone, the speed limit gradually returns to 80 km/h.

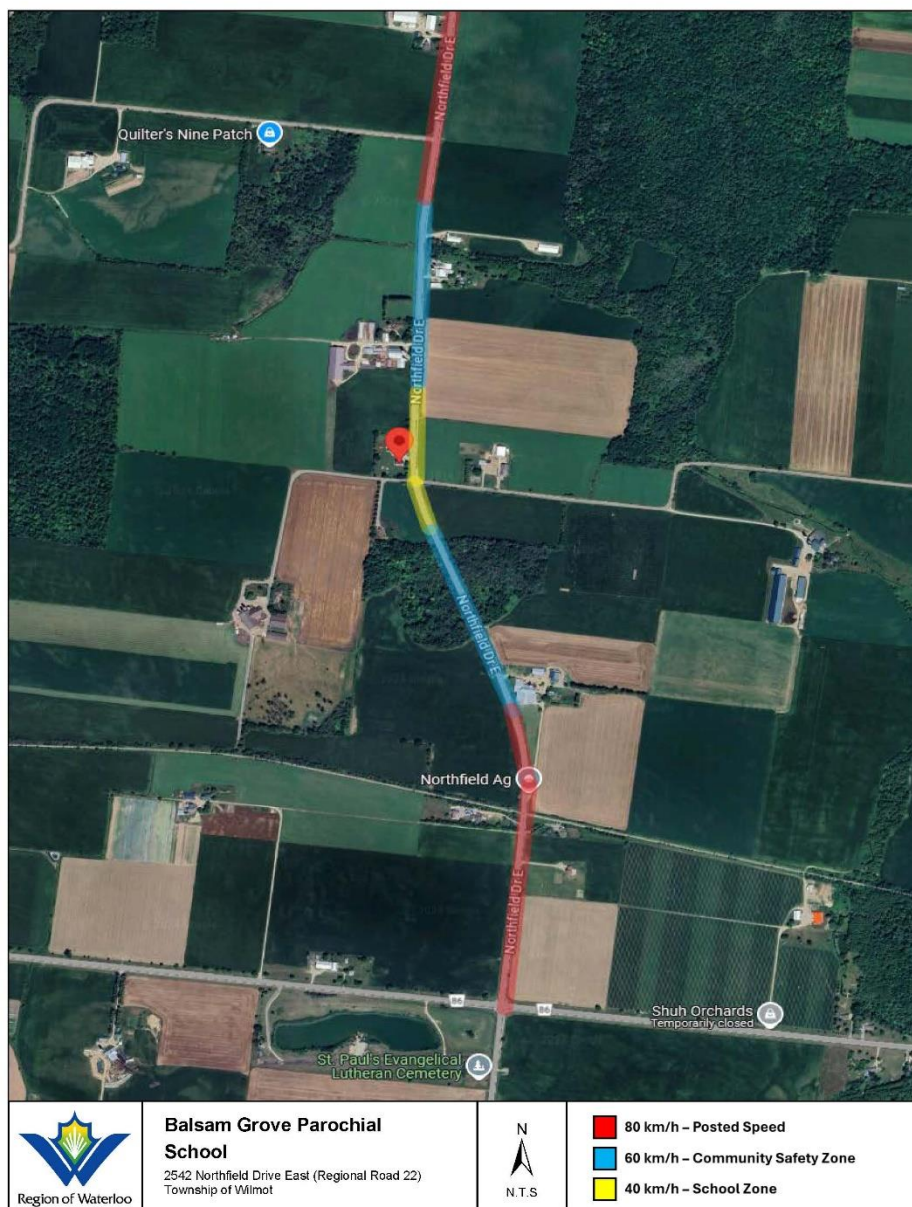


Figure 2 Displays the speed limit changes around Balsam Grove Parochial School. The speed starts at 80 km/h, then drops to 60 km/h as you enter the Community Safety Zone. The Community Safety Zone extends 250 meters in each direction from the school property. After passing the School Zone, the speed limit stays at 60 km/h for an additional 500 meters. The School Zone, covering 150 meters on each side of the school property, has a reduced speed limit of 40 km/h. After passing both the School Zone and the 60 km/h zone, the speed limit gradually returns to 80 km/h.